

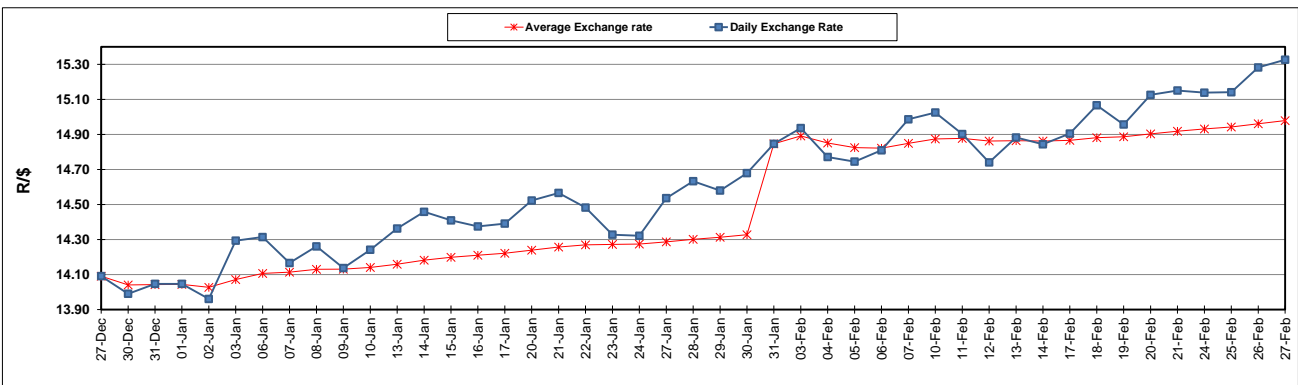
	PETROL 95 ULP	PETROL 93 ULP & LRP	DIESEL 0.05%	DIESEL 0.005%	ILL. PAR.
GAUTENG PUMP PRICE (SA c/l) AS FROM 05/02/2020	1,603.000	1,571.000	-	-	-
WHOLESALE PRICE (SA c/l) AS FROM 05/02/2020	-	-	1,457.260	1,462.660	924.728
SINGLE NATIONAL MAXIMUM RETAIL PRICE	-	-	-	-	1,176.000
BASIC FUEL PRICE - 27/02/2020 (SA c/l)	617.108	604.635	627.524	631.688	613.303
PRESS RELEASE CONTRIBUTION TO BFP 05/02/2020 - 27/02/2020 (SA c/l)	686.970	664.970	737.630	743.030	734.128
UNIT OVER/(UNDER) RECOVERY - 27/02/2020 (SA c/l)	69.862	60.335	110.106	111.342	120.825
AVERAGE BASIC FUEL PRICE 31/01/2020 - 27/02/2020	670.036	658.104	683.650	688.986	667.010
AVERAGE UNIT OVER/(UNDER) RECOVERY 31/01/2020 - 27/02/2020	18.884	8.816	54.730	54.794	67.568

### ANALYSIS MOVEMENT OF AVERAGE OVER/(UNDER) RECOVERY

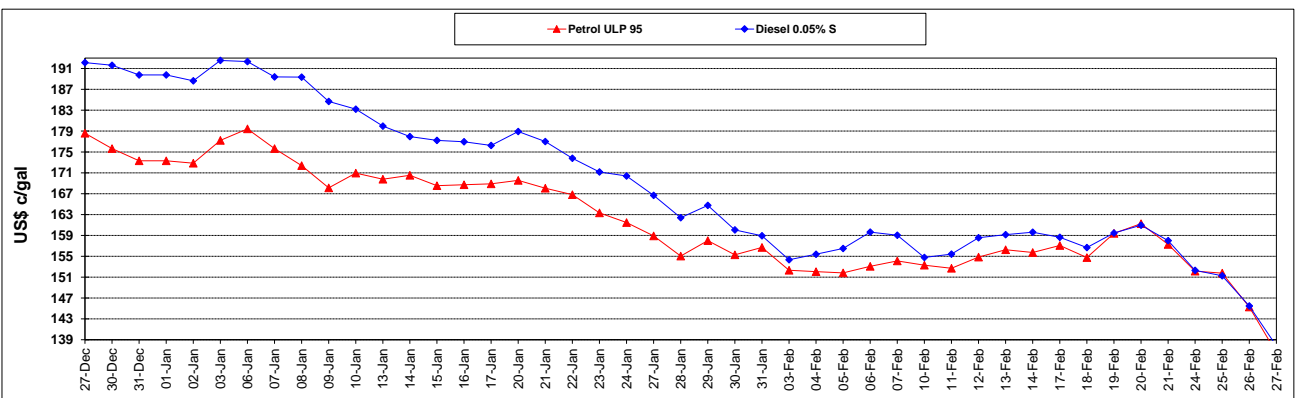
	PETROL 95	PETROL 93	DIESEL 0.05%	DIESEL 0.005%	ILL. PAR.
- MOVEMENT IN INTERNATIONAL PRODUCT PRICES	48.018	37.431	84.456	84.752	96.570
- MOVEMENT IN EXCHANGE RATE	(29.134)	(28.615)	(29.726)	(29.958)	(29.002)
AVERAGE UNIT OVER/(UNDER) RECOVERY 31/01/2020 - 27/02/2020	18.884	8.816	54.730	54.794	67.568

R/\$ EXCHANGE RATE - (R/\$15.3261 - 27/02/2020)

### EXCHANGE RATE USED IN BASIC FUEL PRICE



### INTERNATIONAL PRODUCT PRICES OF BASKET USED IN BASIC FUEL PRICE



### BASIC FUEL PRICE IN SA CENTS PER LITRE

